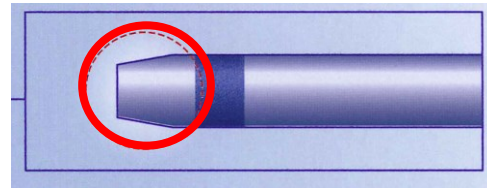




# Core Technology of BISHOP (Micro Catheter)

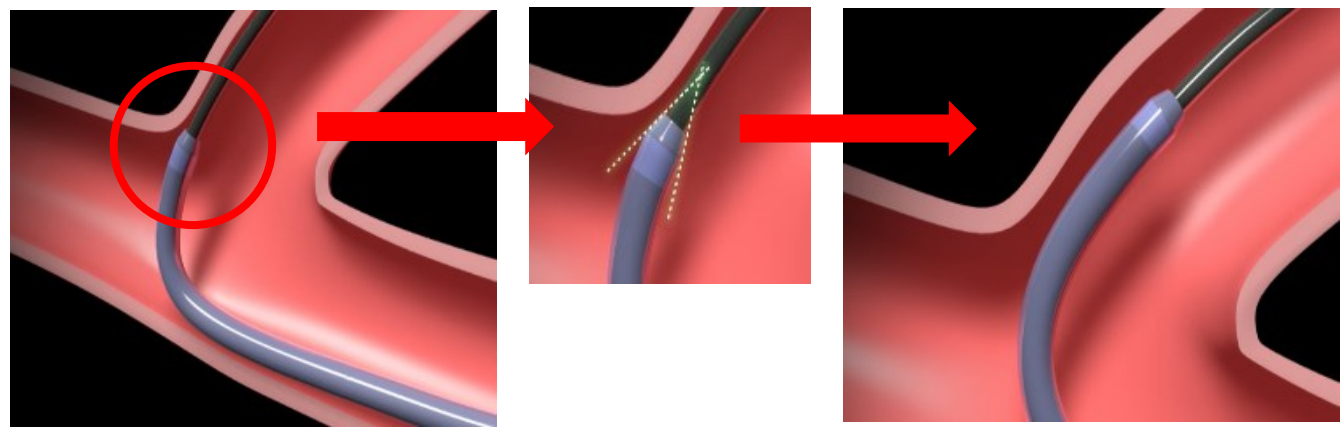
## • Pencil Tip (Tapered Tip)

1.9Fr Micro Catheter

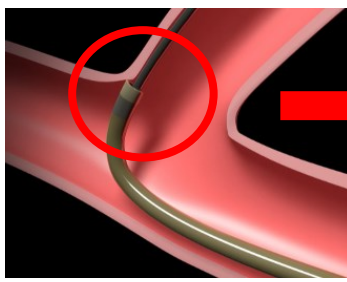


(Tapered Tip is **1.8Fr.**)

Pencil Tip (tapered tip) might not be stuck and pass at vascular bifurcation.

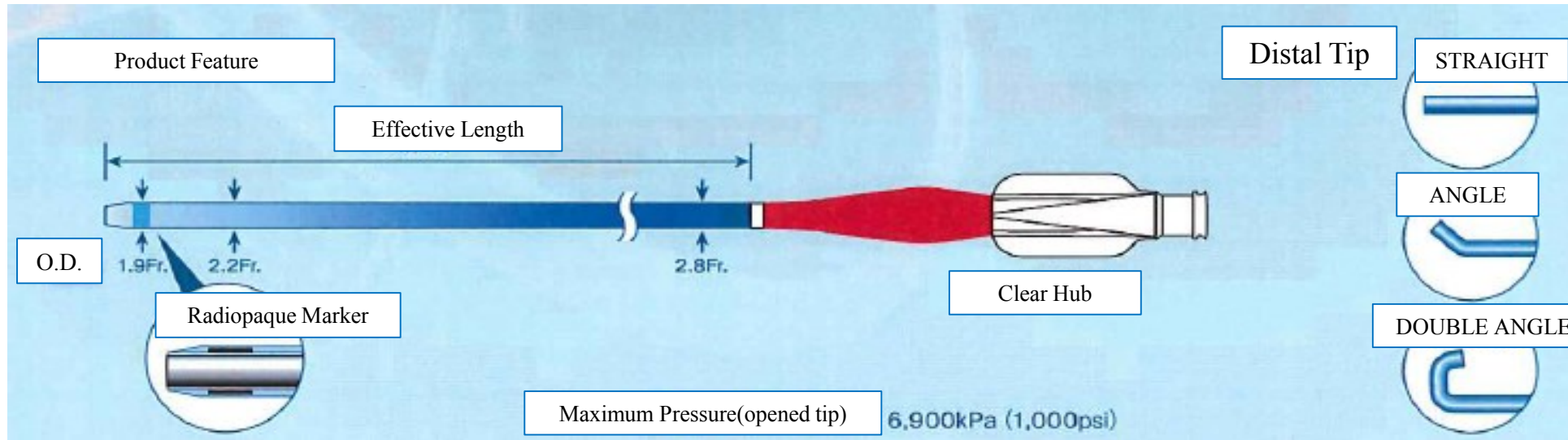


## • Conventional Micro Catheter



Conventional Tip (tapered) is stuck at vascular bifurcation.

# Product Feature



<b>Outer Diameter ( Radiopaque Marker / Distal / Proximal )</b>	<b>1.9Fr(0.645mm) / 2.2Fr(0.73mm) / 2.8Fr.(0.93mm)</b>
<b>Inner Diameter ( Distal Minimized part / Proximal )</b>	<b>0.019 inch(0.49mm) / 0.022 inch (0.55 mm)</b>
<b>Effective Length</b>	<b>1,100mm, 1,300mm, 1,500mm</b>
<b>Recommend Maximum Guide Wire</b>	<b>0.018 inch (0.46 mm)</b>
<b>Maximum Pressure ( Open the Catheter Tip)</b>	<b>6,900 kPa ( 1,000 psi )</b>
<b>Coated Length</b>	<b>650 mm [ Effective Length : 1,100 mm / 1,300 mm ] 1,100 mm [ Effective Length : 1,500 mm ]</b>
<b>Dead Space Volume</b>	<b>0.37 mL [ Effective Length : 1,100 mm ] 0.43 mL [ Effective Length : 1,300 mm ] 0.49 mL [ Effective Length : 1,500 mm ]</b>