

# Revo Wave

*Stiff and Smooth*  
— Endoscopic Guidewire — *Performance*

**PIOLAX**  
Endoscopy

## STRUCTURE OF REVOWAVE

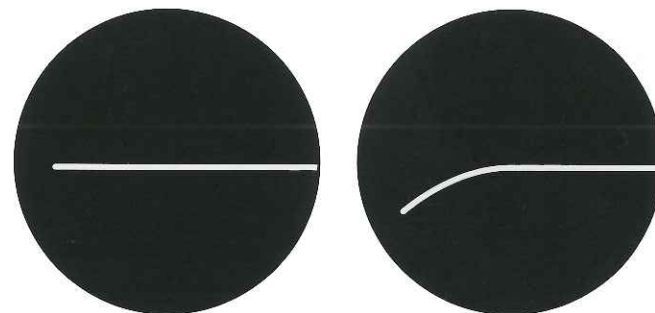


### Visibility under the endoscope



Vivid movements of the guidewire can be confirmed from the fine stripes.

### Shape of Tip



Straight

Angle

## PRODUCTS

Catalog Number	Shaft Type	Length	Shaft Stiffness	Hydrophilic Coating Length	Shape of Tip
EWSA-3545 I	0.035	450cm	Standard	7cm	Angle
EWSS-3545 I	0.035	450cm	Standard	7cm	Straight
EWHA-3545 I	0.035	450cm	Hard	7cm	Angle
EWHS-3545 I	0.035	450cm	Hard	7cm	Straight
EWHA-2545 I	0.025	450cm	Hard	5cm	Angle
EWHS-2545 I	0.025	450cm	Hard	5cm	Straight

Please ask below for further inquiries :

**CE** 0120



ELLA-CS, s.r.o.  
Milady Horakove 504, 500 06 Hradec Kralove 6,  
Czech Republic  
T e l: +420-495-279-111  
Mail: info@ellacs.eu



PIOLAX MEDICAL DEVICES, INC.  
179 Kariba-cho, Hodogaya-ku, Yokohama-shi  
Kanagawa 2400025 Japan  
T e l: +81-45-548-9888  
Mail: pmdinfo@piolax.co.jp

# Revo Wave

*Endoscopic Guidewire*  
*Stiff & Smooth Performance*



# EVERLASTING WAVE OF REVOLUTION <REVOWAVE>

The revolutionary wave patterns lead to excellent lubricity of the guidewire.

3 key factors: **safeness**, **smoothness** and **stiffness** are well-balanced into this endoscopic guidewire.

It fulfills well of the demands of new medical devices, new procedures and expanded indications regarding endoscopic treatments.



Figure of Tip Structure

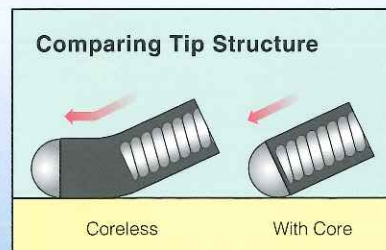
## Safe

### ATRAUMATIC TIP

Spherical tip has less harm on tissues of ducts.

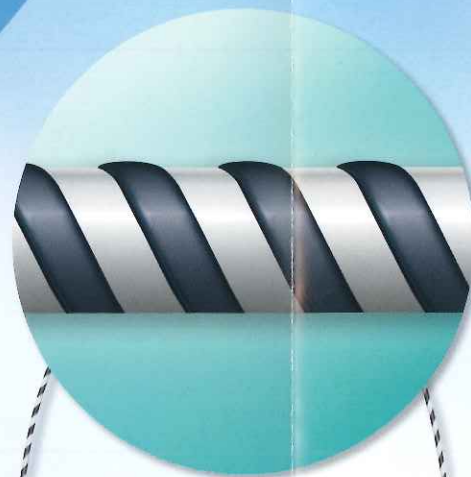
### CORELESS TIP

Coreless processing on the tip reduces friction on tissues of ducts during insertion.



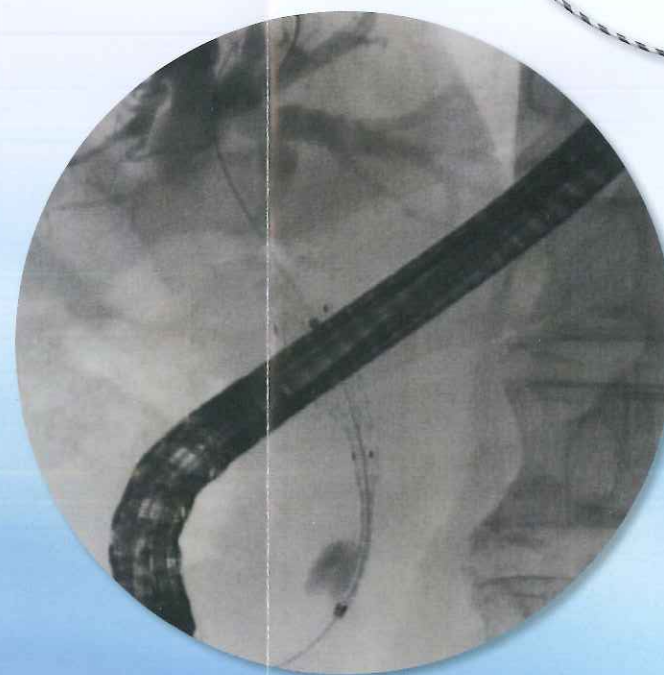
### HYDROPHILIC-COATED TIP

The Urethane resin tip is hydrophilic-coated which reduces friction on tissues that leads to higher performance and improvement in transmission through strictures.



### VISIBILITY UNDER THE ENDSCOPE

Vivid movements of the guidewire can be confirmed from the fine stripes.

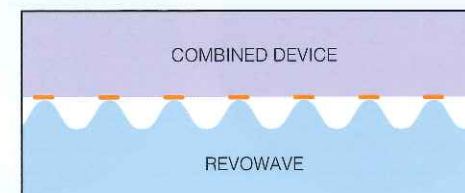


## Smooth

### A SURFACE STRUCTURE OF A SPECIAL WAVE

The smaller area of contact with the inner wall of combined devices leads to smooth manipulation and device exchanges with Revowave.

Surface structure of Revowave \*Applying for a patent



The surface structure decreases the area of contact with the inner wall of the combined device.

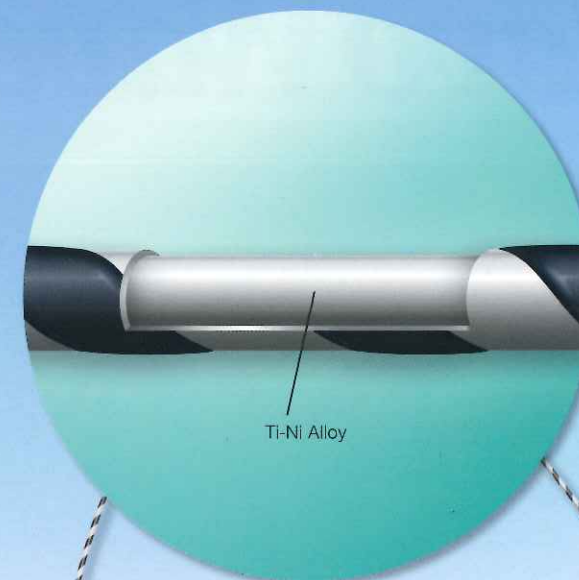


Figure of The Inner Structure

## Stiff

### SUPPORTING ABILITY

Device supporting ability is improved by its specially processed corewire.

### TORQUE TRANSMISSION ABILITY

Improved torque transmission by specially processed corewire supports difficult procedures such as passages through severe strictures and selection from bifurcated branches.

### VARIATIONS OF SHAFT DIAMETER, TIP SHAPE AND SHAFT STIFFNESS

**SHAFT TYPE** 0.025 and 0.035

**TIP SHAPE** Angle / Straight

**SHAFT STIFFNESS** Standard and Hard  
\* Both available only for 0.035 types